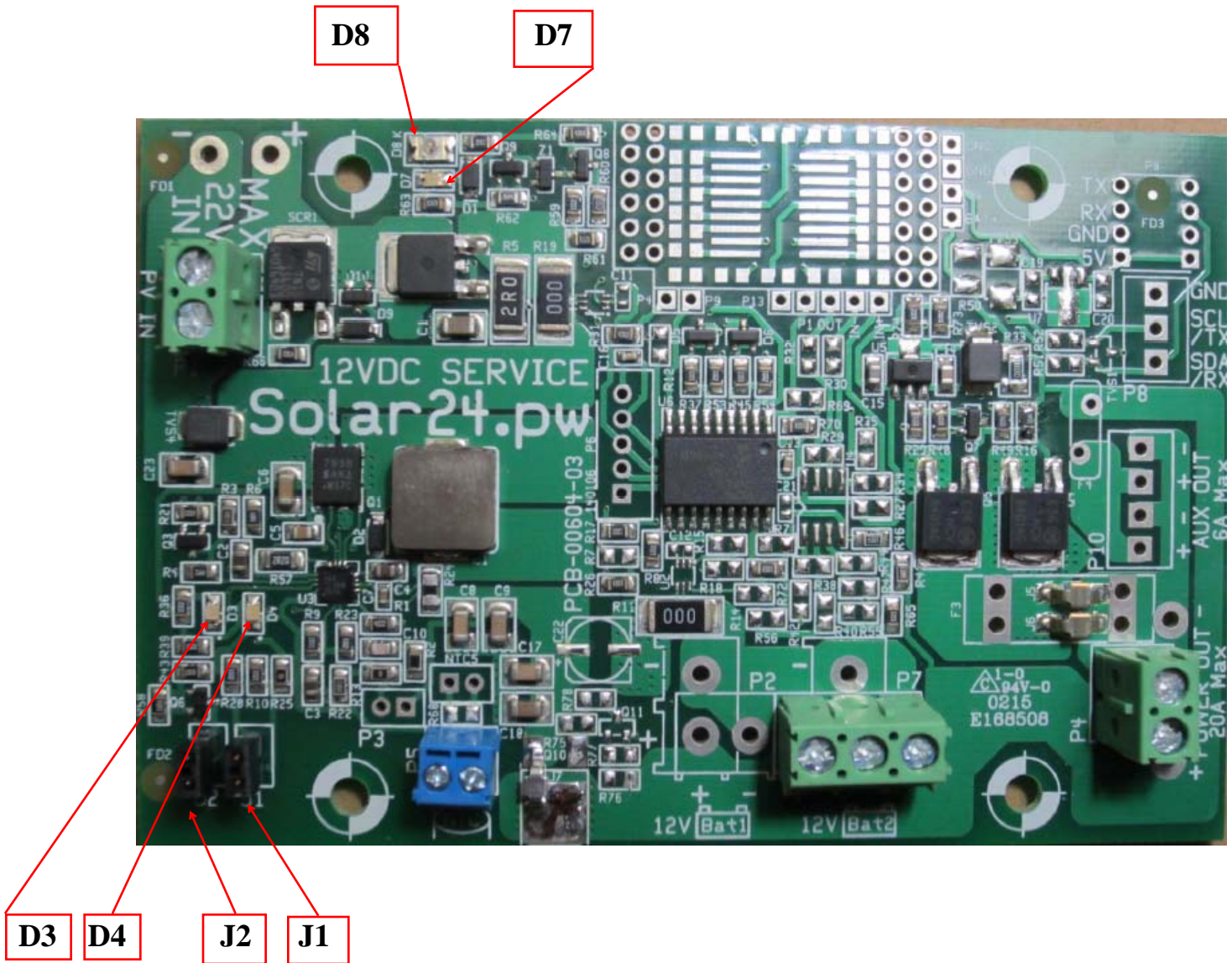


Solar24 PCB indicators and jumpers



D8 is a red LED and illuminates only if the PV panel is connected incorrectly, reversed biased. Make sure the PV positive and negative wires are connected correctly.

D7 is a green LED and will illuminate if the PV panel is connected correctly and is less than 28 volts.

D3 is a green LED and indicates that the battery is charging.

D4 is a green LED and indicates that the battery has completed the charge cycle.

J2 sets the charge profile, installed for LiFePO4, removed (or only on one pin) for lead acid.

J1 is used for a battery not equipped with a thermistor. The jumper is removed or only on one pin if the battery pack is equipped with a 10K NTC thermistor.